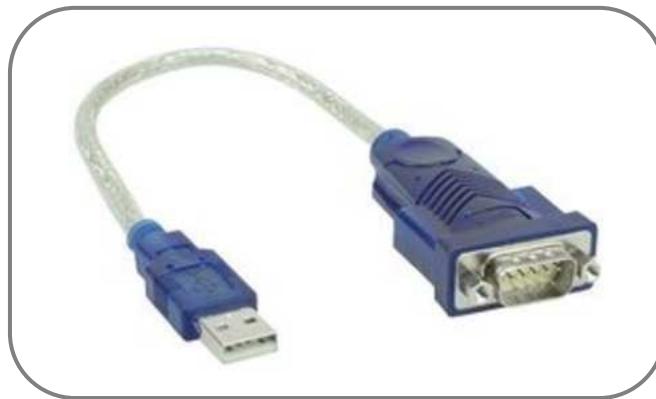




## **Drivers Manual of installation**

This manual makes reference to the installation of the driver for the converter usb-serial (see picture hereafter) supplied with our A-411.



### **Important Communication**

**DON'T USE OUR DRIVERS** if for your A-411, you use a USB adapter different from this one. In this case, the drivers to install will be those supplied by the manufacturer of your system.

The drivers for this adapter presents on our website till 12-03-2011 under the name of file

**« drivers\_rs232\_usb\_xp.zip »**

gave problems of communication on the computers with operating system Windows 7. The updated version of the drivers of this manual and named

**« DriverInstaller\_v130.zip »**

solves completely all raised problems of communication with the previous versions.


**IT IS VERY IMPORTANT TO DISINSTALL THE OLDER DRIVERS  
BEFORE THE INSTALLATION OF THE NEW ONES.**

## Exploratory operations before the installation of the device

**NB: Execute these operations only if in the computer is already present a former installation of drivers, otherwise pass directly to the phase “Installation Driver”**

1. Disinstall the former driver.
2. Start again the computer.

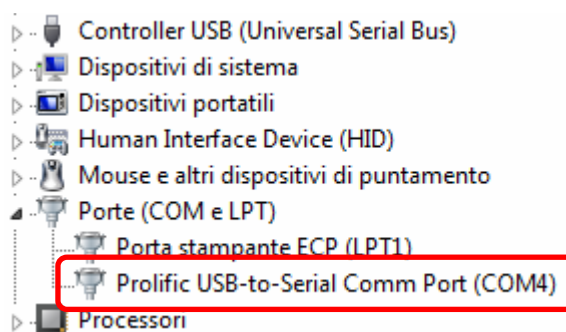
## Installation Driver

1. Execute the file  DriverInstaller\_v130.exe Setup.exe Macrovision Corporation useful to the installation of the driver.
2. To the term of the installation, connect the adapter to the computer.

## Check the correct installation of the driver

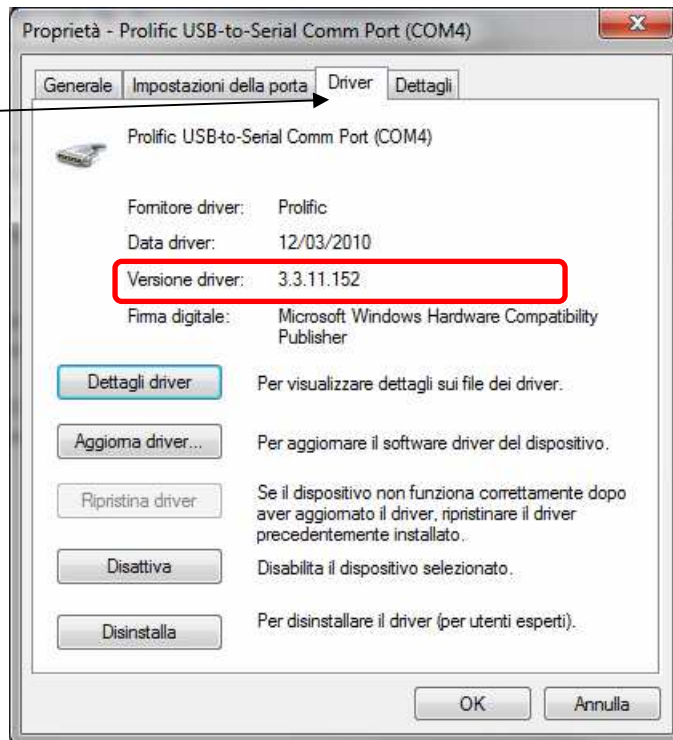
**Make sure that the device is connected to the computer.**

1. Check in “Devices/Peripheral Management” the correct installation of the device, if the driver is installed correctly the following window will be visualized while opening the submenu “Gate (COM and LPT)” present in the list of the devices installed on the computer :



2. Check the version of driver by a right click mouse on the device “Prolific USB-to-Serial Comm Port (COM X)”, successively do a click on the application “Property”, the below represented window will be visualized :

3. Select the tab  
“Driver”



The number of version of your driver updated and installed correctly on your computer will depend, as indicated below, of your operating system :

Operating System	Driver Version
Windows 98/Me	2.0.0.19
Windows 2000 / Xp / Server 2003	2.0.13.130
Windows Vista / 7 / Server 2008	3.3.11.152

**ALFANO S.A.**

Rue de l'Industrie, 3b – 1400 NIVELLES (BELGIUM)

[www.alfano.com](http://www.alfano.com)